



Sheraton  
Grand

LONDON PARK LANE

# Elevated Stays

SHERATON GRAND  
LONDON PARK LANE SUITES

Piccadilly, London,  
England, W1J 7BX,  
United Kingdom  
T (+44)(207) 499 6321  
[sheratonparklane.com](http://sheratonparklane.com)

# Destination & Location



250 FREE  
ATTRACTIONS  
ACROSS  
THE CITY



FIVE AIRPORTS  
OFFERING DIRECT  
FLIGHTS TO  
**348**  
DESTINATIONS

MORE MUSEUMS  
THAN ANY OTHER CITY  
IN THE WORLD



MANY WITH FREE ENTRY,  
INCLUDING  
3 OF THE  
WORLD'S TOP 5

THE MOST CONNECTED  
CITY ON THE PLANET

Connect  
directly to

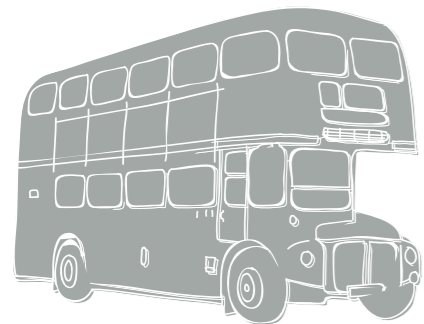


PARIS

EDINBURGH



2 HOURS 16 MINUTES  
4 HOURS 28 MINUTES



Did you know the Queen of England took dance lessons here in our very own Tudor Rose room?



4 MINUTE WALK  
**Buckingham  
Palace**



UNPARALLELED  
ACCESS TO  
QUALITY  
THEATRE



INCLUDING SHAKESPEARE'S  
GLOBE AND HOME  
OF THE LEGENDARY

WEST END



THE MOST  
CONNECTED CITY ON  
THE PLANET



303 rooms available for  
exclusive use on site and  
752 Starwood rooms  
within walking distance



A celebrated Art Deco hotel in the heart of London Mayfair, facing Green Park and just a short walk away from Buckingham Palace, Sheraton Grand London Park Lane is ideally located to connect with the city of London.



Over  
6,000

EXPLORE  
restaurants and bars

Harrods & Harvey Nichols

12 minute walk from  
the hotel



FORMER  
SHERATON GRAND  
LONDON PARK  
LANE RESIDENTS

Nelson  
Jackie Collins  
Bob Dylan



## Location

Located in the heart of London Mayfair, the Sheraton Grand London Park Lane hotel sits on the corner of Hyde Park and is steps away from Buckingham Palace and Green Park. With a taxi rank located outside the hotel you are a taxi journey or even a short walk from the iconic Knightsbridge, historical Harrods and the shop lined streets of Saville Row and Bond Street. Discover the best of British designers such as Burberry, Anya Hindmarch, Stella McCartney and Vivienne Westwood whilst experiencing Mayfair's legendary art, dining and social scene.

## Hotel Services

Everything you could need for an effortless stay is located within the hotel, from the 24 hour gym to the restaurants and lounges located within the building. Enjoy traditional Italian dishes at Mercante Restaurant or a Classic British Afternoon Tea in the stylish Palm Court Lounge.

## Suites Overview

The Sheraton Grand London Park Lane boasts 30 large and luxurious suites each individually designed to reflect the hotel's traditional English heritage fused with stylish Art Deco design. Starting at a generous 31 sqm and extending up to a sizeable 95 sqm across the three categories, each suite has the comfort and space to experience every exclusive amenity and service on offer.

Here at the Sheraton Grand London Park Lane Hotel we understand the importance of being connected to family and friends which is why we are one of the only hotels in London to offer 3 and 4 bedroom private suites complete with their own private corridor.

**Sheraton  
Grand**



## Art Deco Suite

Rich in style, the Art Deco suites showcase distinctive furniture design and impressive views across the city. With a generous walk-in wardrobe, dining area seating up to six and a complimentary Afternoon Tea during your stay this is the perfect suite to spend the weekend with friends or family exploring Mayfair's finest shops, British designers and exclusive restaurants.

31 - 53 m<sup>2</sup>

Access to the Club Lounge

Unlimited Wi-Fi & portable free Wi-Fi with 'Handy' device

Nespresso machine

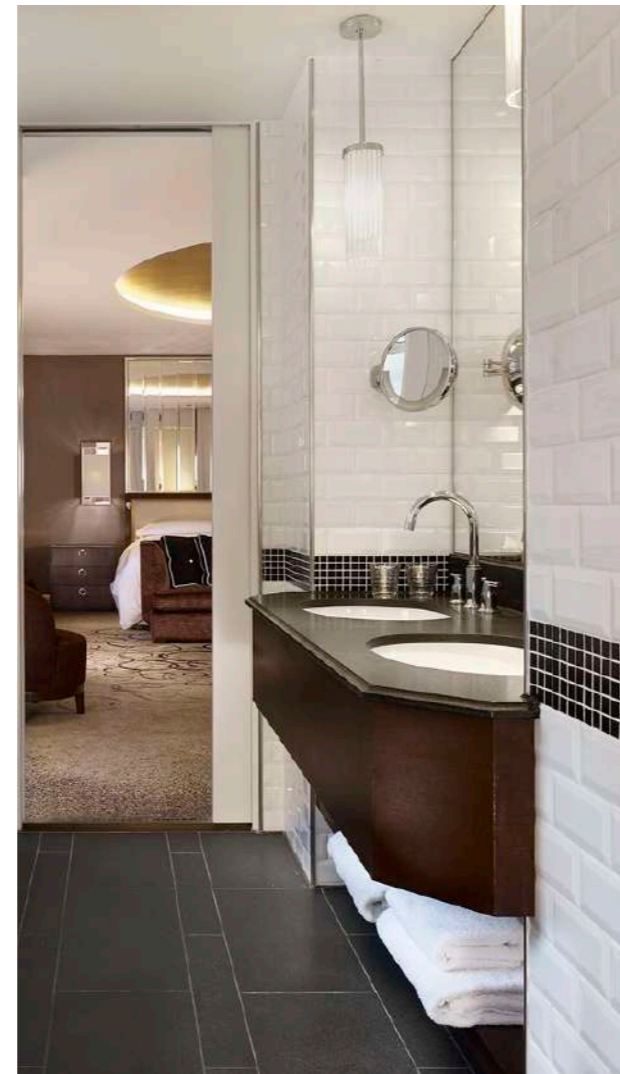
Walk in wardrobe

Bidet available in the bathroom

Molton Brown bathroom amenities

A complimentary Birdcage Afternoon Tea at the Palm Court

City views



**Sheraton  
Grand**

# Art Deco Suite & Superior Twin, Club King & Classic Queen





## Park View Suite

The renovated Park View Suites reflect the character of the city's famous Green Park which they overlook. With light, airy and homely spaces, these generously sized suites offer comfortable seating areas, a six seater dining table and adjoining areas which provide ample space for working, entertaining and relaxing. Connect up to three rooms joined together with an exclusive access corridor, perfect for family stays.

51 - 73 m<sup>2</sup>

Access to the Club Lounge

Unlimited Wi-Fi & portable free Wi-Fi with 'Handy' device

Complimentary international calls to the UAE

Nespresso machine

Bidet available in the bathroom

Molton Brown bathroom amenities

Welcome signature cocktail or mocktail

Complimentary shave at local barber shop, 'Jack the Clipper' for males and manicure/pedicure at 'Nails and Browns' for females or a complimentary Birdcage Afternoon Tea

Views of Green Park



**Sheraton  
Grand**

# Park View Suite & Superior Twin Room





## Grand Suite

The Grand Suite is a statement in luxury; a stylish and spacious one bedroom apartment completed with living and dining areas, study and guest bathroom. The door opens to a generous lobby space where guests can access any area within the suite. Rooms are interconnected with double-width sliding pocket doors, enabling the entire suite to be opened into a single space. The main bathroom is an exceptional example of art deco design, with astonishing original marble finishes and a large restored bathtub. Connect with another two bedrooms with private corridor to create a large apartment style feel to your stay, ideal for stays with friends or family.

95 m<sup>2</sup>

Access to the Club Lounge

Unlimited Wi-Fi & portable free Wi-Fi with 'Handy' device

Nespresso machine

Dining Area which can seat up to 6 guests

Bidet available in the bathroom

Molton Brown bathroom amenities

Courtesy transfer services to or from the airport

A bar with a professional bartender to enjoy the best of spirituous drinks

Complimentary shave at local barber shop, 'Jack the Clipper' for males and manicure/pedicure at 'Nails and Browns' for females or a complimentary Birdcage Afternoon Tea with Classic Tea selection at the Palm Court

Option to connect 2 additional bedrooms with private corridor

Views of Green Park



**Sheraton  
Grand**

# Grand Suite & Superior King & Classic Queen







A Mayfair Art Deco Address for the modern traveller.